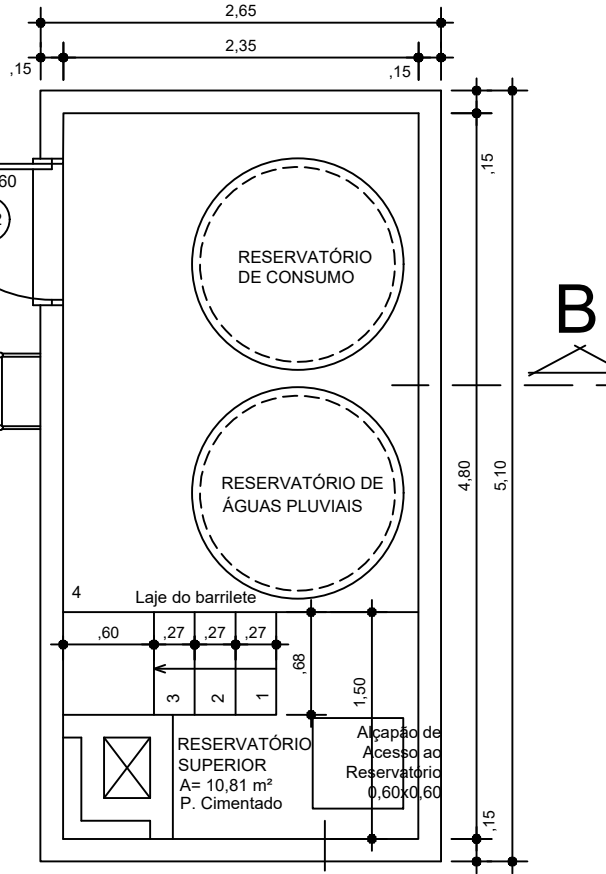
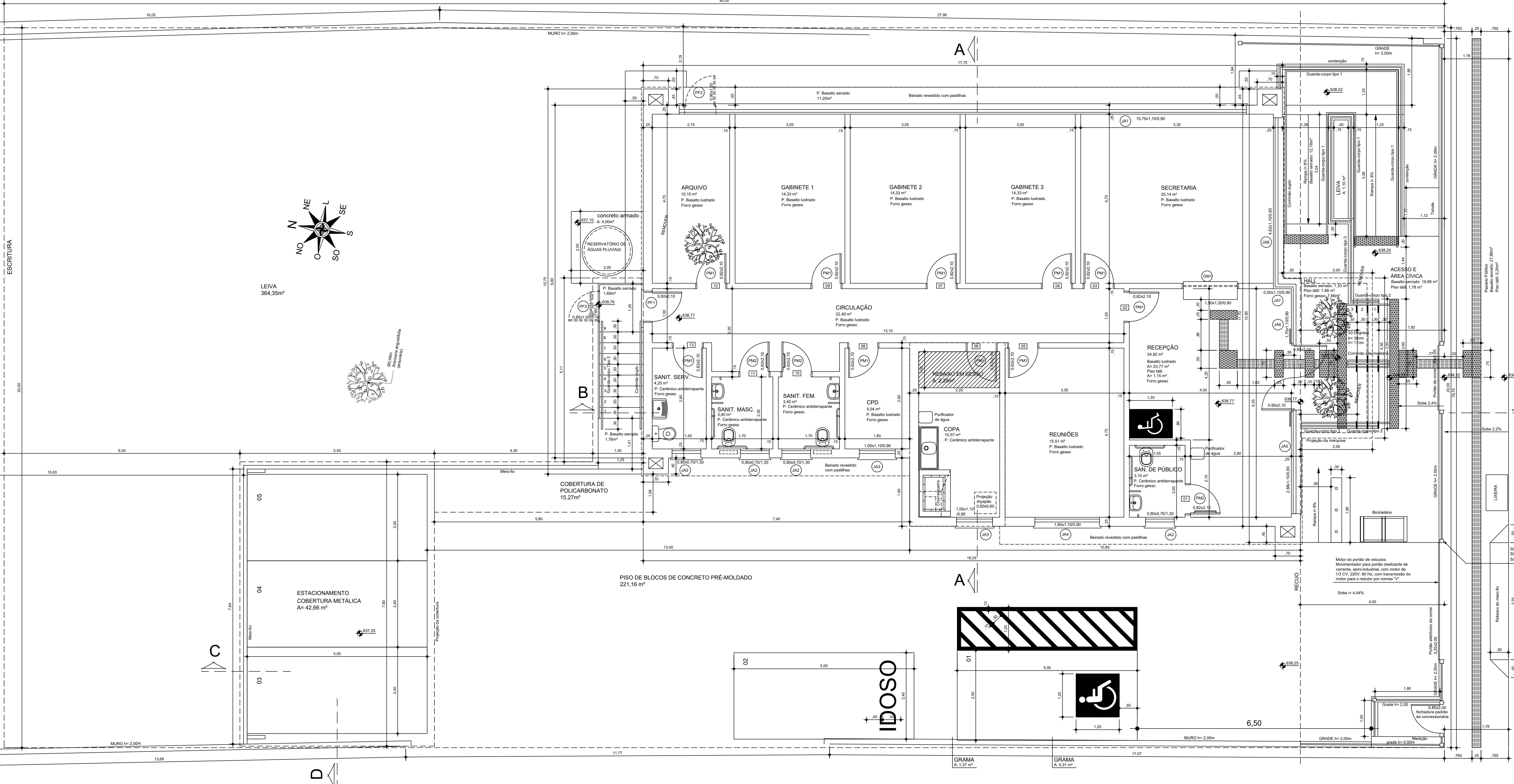
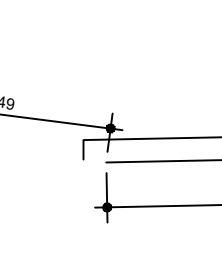
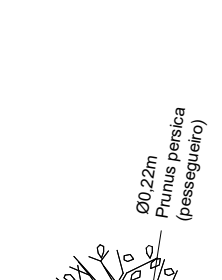
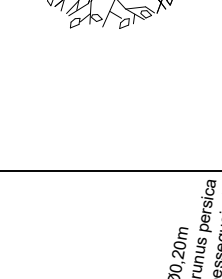
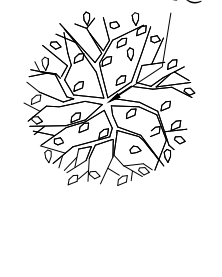
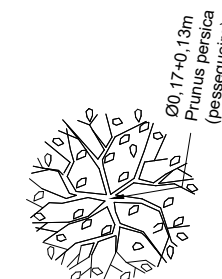


LEVANTAMENTO TOPOGRÁFICO

10,75

1,49



RESERVATÓRIO SUPERIOR
SOBRE A COPA
Esc.: 1/50

 MINISTÉRIO PÚBLICO PROCURADORIA-GERAL DE JUSTIÇA DIVISÃO DE ARQUITETURA E ENGENHARIA		
OBRA	PROMOTORIAS DE SANANDUVA	ÁREA TOTAL 269,21 m²
CONTEÚDO	PLANTA BAIXA	ESCALA 1/50
ENDEREÇO	Rua João Júlio Leite, Lote 5-B, Quadra 62-A	DATA Nov./2019
PROCURADOR GERAL DE JUSTIÇA	DIRETOR GERAL	ÚLTIMA ATUALIZAÇÃO JUL/2020
COORD. DIVISÃO DE ARQUITETURA E ENGENHARIA MPJRS RESPONSÁVEL TÉCNICO PROJETO	PROJETO - COAUTORA	DESENHO PRINCHA
		A-02